

# CENTRE FOR CLINICAL SKILLS & SIMULATIONS

## LIST OF GADGETS/ EQUIPMENTS AVAILABLE IN THE CENTRE

Sl. No.	Equipment's /Gadgets	Quantity
1	Mega Kelly, Vital Sim	01
2	Choking Charlie Adult	01+1
3	Baby Anne	04
4	Airway management trainer	02
5	CPR manikins	09
6	Rescue Anne	01
7	Skin Pad with Holder	100 Nos
8	Bowel simulator	10 Box
9	Abdominal wall simulator	20 Nos
10	Surgical skill station	40
11	Episiotomy suturing simulator	20 Nos
12	Heart & Breath sounds Simulator	01
13	Child Birth Simulator	02
14	Central venous cannulation simulator	01
15	Endo trainers with instruments	06 set
16	Advanced Venipuncture Injection Arm – adult	04
17	Interchangeable catheterization trainer	02+8
18	NG tube & tracheal care trainer	01
19	Eye examination simulator	01
20	Ear examination Simulator	01+01
21	Pediatric multi venous IV trainer arm kit	03
22	Pediatric Intubation trainer	01+01

23	Thoracic & Lumbar epidural Anaesthesia Simulator	01
24	Chest drain & Needle compression trainer	01
25	Intradermal Injection Simulator	04
26	Buttock Injection Simulator	04
27	CPR Lilly PRO with Tablet	02
28	Blood Pressure Training Arm	02
29	Adult CPR Manikin (QCPR)	01
30	Trauma Nursing Manikin	01
31	Neonatal Peripheral	01
32	Child Nursing training manikin	01
33	suture practice Arm	02
34.	Wound care and Bandaging Techniques	06
35.	Airway Management Child	01+01
36.	Infant Male and Female Catheterization Trainer	01
37.	Advanced Gynecological Examination Trainer	02
38.	Ventilator- 7i	01
39.	BX-1000 ARTHORO BOX BASIC SET	01
40.	Infant Intraosseous	01
41.	Infant CRiSis	01
42.	Choking Child	01
43.	Critical Airway Management	01
44.	Breast Examination model	02
45.	Nose Bleed Trainer	02

# Suturing & Knotting

## ➤ LEARNING OBJECTIVES

**At the end of the session the Student/learner should be able to**

- Enumerate the different types of suturing & knotting techniques
- understand the principles of suturing & knotting and their application
- Perform various knots & suturing

## ➤ LOGISTICS REQUIRED

- Knotting pads
- Suturing pads
- Surgical instruments –BP-Knife, Needle holder, scissors, forceps

## ➤ ASSESSMENT

Practical demonstration of Performing Square, Granny & Surgeon's knots.  
Performing simple & mattress suturing.



**Surgical skill station**



**Skin pad**

## Laparoscopic Skills

### ➤ LEARNING OBJECTIVES

At the end of the session the Student/learner should be able to

- Identify the various instruments used in laparoscopic surgery
- Understand the concepts of hand -eye co-ordination
- Perform various types of laparoscopic exercises
- Perform endo-suturing and knotting techniques

### ➤ LOGISTICS REQUIRED

- Endo-trainer with accessories

### ➤ ASSESSMENT

Practical demonstration to perform various endoscopic drills



Endotrainer

## Intestinal/ Vascular Anastomosis

### ➤ LEARNING OBJECTIVES

**At the end of the session the Student/learner should be able to**

- Identify the specific instruments used to perform Intestinal /vascular anastomosis
- Understand the techniques of Intestinal/Vascular anastomosis
- Perform the two layer/four layer anastomosis of the intestines

### ➤ LOGISTICS REQUIRED

- Natural feel simulated bowel
- Natural feel multi caliber arteries & veins

### ➤ ASSESSMENT

Demonstrating steps of anastomosis



## Laparotomy and closure

### ➤ LEARNING OBJECTIVES

**At the end of the session the Student/learner should be able to**

- Identify the various layers of abdominal wall
- Place an incision precisely at different layers abdominal
- able to perform continuous / interrupted / subcuticular suturing
- able to perform layer or mass closure using loop sutures.
- able to insert a Verses needle / Trocar

### ➤ LOGISTICS REQUIRED

- Abdominal wall simulator
- Surgical instruments

### ➤ ASSESSMENT

Demonstration of steps of Laparotomy



## Child Birthing

### ➤ LEARNING OBJECTIVES

**At the end of the session the Student/learner should be able to**

- To understand the mechanism of child birth
- Perform vaginal examination
- Recognize normal & abnormal FHS
- To demonstrate internal rotation, expulsion, external rotation.
- To perform Leopold's Maneuver.
- To resuscitate the newborn

### ➤ LOGISTICS REQUIRED

- Maternal & Neonatal Simulated system

### ➤ ASSESSMENT

Practical Demonstration to conduct normal & complicated labor under different case scenarios



## Fracture Fixation

### ➤ LEARNING OBJECTIVES

**At the end of the session the Student/learner should be able to**

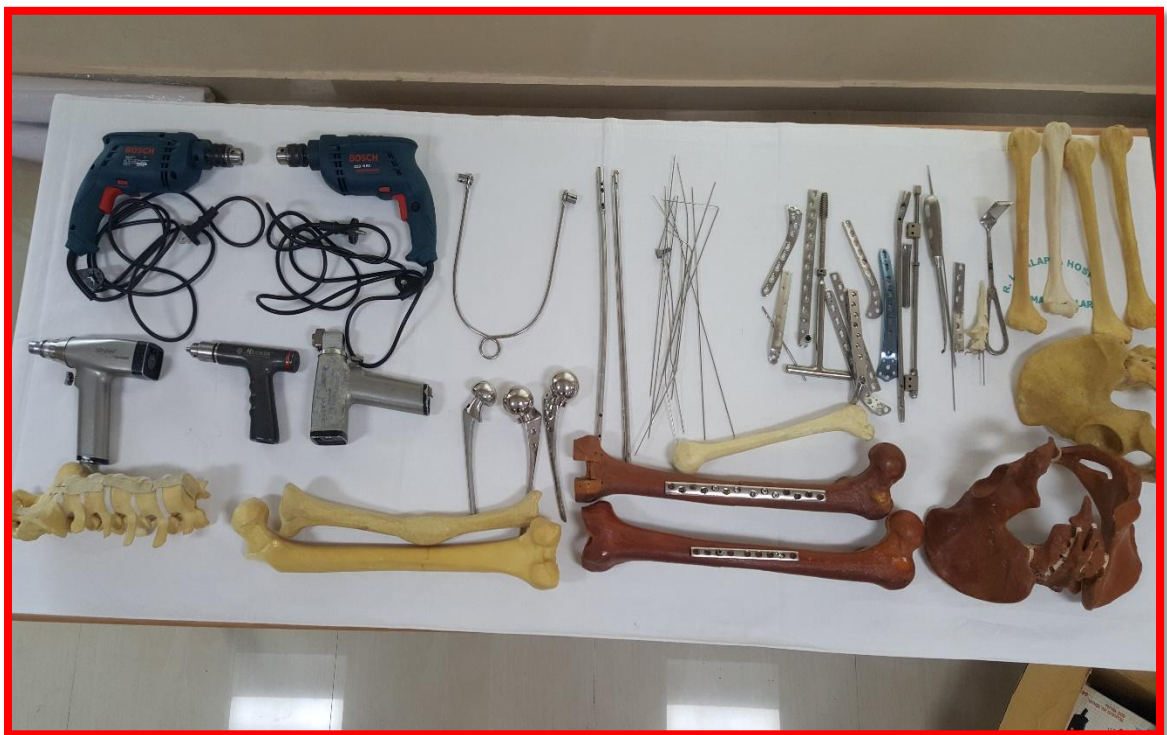
- To identify the various instruments used for fracture fixation of Long bones & Spine
- To familiarize with the concepts of Fracture fixation and stabilization of spine
- To perform intramedullary nailing and plating techniques/spine fixation

### ➤ LOGISTICS REQUIRED

- Screws & Plates
- Intramedullary Nail
- Drill system
- Pedicle screw instruments

### ➤ ASSESSMENT

Practical Demonstration of Intramedullary nailing & Spine Fixation



Fracture Fixation station



## Examination of Eye

### ➤ **LEARNING OBJECTIVES**

**At the end of the session the Student/learner should be able to**

- Practice the use of ophthalmoscope, Examine the fundus & Identify various pathology in the eye

### ➤ **LOGISTICS REQUIRED**

- Eye Examination Simulator ophthalmoscope

### ➤ **ASSESSMENT**

Practical demonstration to identify various pathology in the eye



**Eye Examination**



**Eye examination simulator**

## Examination of ear

### ➤ **LEARNING OBJECTIVES**

**At the end of the session the Student/learner should be able to**

- Use and handle an otoscope
- Examine the acoustic meatus, tympanic membrane & recognize various pathologies
- Perform ear wax & foreign body removal

### ➤ **LOGISTICS REQUIRED**

- Ear examination Simulator
- Foreign body removal set

### ➤ **ASSESSMENT**

Practical demonstration to identify the various pathology of Acoustic meatus & Tympanic membrane



**Ear Examination simulator**

## Lumbar & Epidural Puncture

### ➤ LEARNING OBJECTIVES

**At the end of the session the Student/learner should be able to**

- Enumerate the steps in identification of Intrathecal and Epidural Space
- Enumerate the different methods of Identification of Epidural space

### ➤ LOGISTICS REQUIRED

- Lumbar Spinal & Epidural Simulator
- Spinal & Epidural Needles

### ➤ ASSESSMENT

To demonstrate the technique of Spinal & Epidural anaesthesia



**Lumbar & Epidural Puncture simulator**

## Paediatric Resuscitation

### ➤ LEARNING OBJECTIVES

At the end of the session the Student/learner should be able to

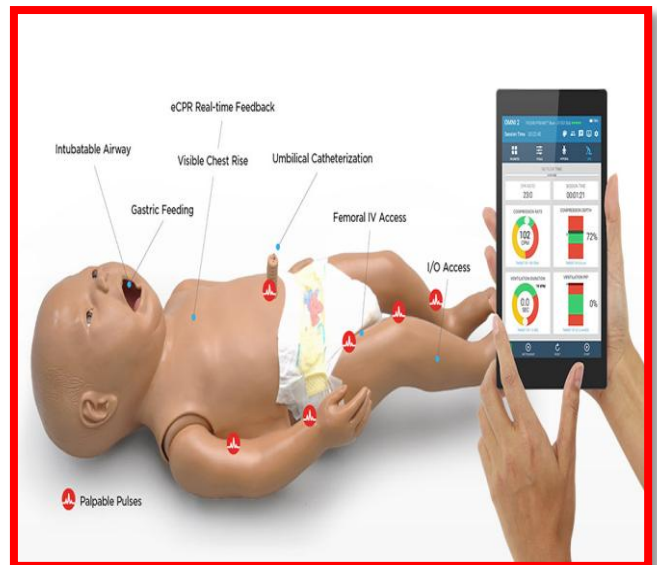
- Initiate CPR
- To give effective breaths & compressions

### ➤ LOGISTICS REQUIRED

- Baby Anne Manikin

### ➤ ASSESSMENT

Practical assessment of Steps of Paediatric Resuscitation



## Paediatric Resuscitation

## Heart & Breath Sounds

### ➤ LEARNING OBJECTIVES

At the end of the session the Student/learner should be able to

- To identify types of Heart & Breath sounds

### ➤ LOGISTICS REQUIRED

- Heart & Breath sound Simulator, Stethoscope

### ➤ ASSESSMENT

Practical assessment for identification of normal and abnormal sounds



**Heart & Breath Sounds Trainer**

## **AIRWAY - Endotracheal Intubation (Adult/Paediatric)**

### ➤ **LEARNING OBJECTIVES**

- To do direct laryngoscopy & identify the structures
- To do endotracheal intubation

**At the end of the session the Student/learner should be able to**

### ➤ **LOGISTICS REQUIRED**

- Advanced airway manikin
- Laryngoscope and blades
- Endotracheal tubes

### ➤ **ASSESSMENT**

Practical demonstration of Laryngoscopy and Intubation



**Advanced airway manikin**

## Chest Drain

### ➤ LEARNING OBJECTIVES

**At the end of the session the Student/learner should be able to**

- To identify the intercostal space for paracentesis
- To insert a needle for decompression and use drain for Thoracocentesis

### ➤ LOGISTICS REQUIRED

- Chest Drain and Needle compression Trainer
- Surgical Blade, Artery Forceps, Needle, ICD set

### ➤ ASSESSMENT

Practical demonstration of paracentesis and ICD insertion



Needle compression Trainer

## Catheterization

### ➤ LEARNING OBJECTIVES

**At the end of the session the Student/learner should be able to:**

- To adopt aseptic catheterization technique
- Catheter insertion & Withdrawal

### ➤ LOGISTICS REQUIRED

- Advanced catheterization trainer
- Foley's Catheter with bag

### ➤ ASSESSMENT

Practical demonstration of catheterization of male & female



**Catheterization Trainer (Male & Female)**



## Venipuncture (Adult and pediatric)

### ➤ LEARNING OBJECTIVES

**At the end of the session the Student/learner should be able to:**

- To demonstrate steps in Intravenous access
- To secure IV cannula

### ➤ LOGISTICS REQUIRED

- Venipuncture Arm manikin, IV Cannula
- Drip Set with IV fluid

### ➤ ASSESSMENT

Practical demonstration of Venipuncture and fixing of IV cannula



## Venipuncture ARM

## Central Venous cannulation

### ➤ LEARNING OBJECTIVES

**At the end of the session the Student/learner should be able to:**

- To Demonstrate the anatomy of Internal jugular veins
- To identify IJV and puncture with needle and secure the CV cannula

### ➤ LOGISTICS REQUIRED

- Central venous cannulation simulator
- CV cannula
- CV needle
- IV Fluid

### ➤ ASSESSMENT

Practical demonstration of Central Venous cannulation



**Central venous cannulation manikin**

## Episiotomy

### ➤ LEARNING OBJECTIVES

**At the end of the session the Student/learner should be able to**

- Perform an episiotomy and systematic closure in layers

### ➤ LOGISTICS REQUIRED

- Episiotomy model with necessary instruments

### ➤ ASSESSMENT

Practical demonstration to perform episiotomy & suturing



**Episiotomy suturing trainer**

## Foreign body airway obstruction

### ➤ LEARNING OBJECTIVES

At the end of the session the Student/learner should be able to

- Perform back blow, chest thrust, and Heimlich's maneuver

### ➤ LOGISTICS REQUIRED

- Choking Charlie
- Baby Anne

### ➤ ASSESSMENT

Practical demonstration of dislodging of foreign body



**The Choking Charlie manikin**



**Baby Anne**

## CPCR

**Objectives:** At the end of this workshop the student should be able to:

- Identify a patient with cardiac arrest & initiate sequence of CPCR in adults.
- Deliver effective chest compressions.
- Maintain patent airway and provide adequate oxygenation by Artificial Respiration.
- Recognize and relieve Foreign Body Airway Obstruction in children and adults.
- Identify the Shockable rhythms and the use of AED.
- Identify Reversible causes of Cardiac arrest and use of Drugs.

**Station I-BLS** (Adult Manikin)

**Station II-Foreign Body**- (Choking Charlie and little Anne Manikin)

**Station III-ACLS** - (Defibrillator and Drugs)

**Station IV - Airway**-(Guedel's Airways, AMBU, Laryngoscope, LMA, I GEL, and Endotracheal tubes)

**Assessment:**

- Pre Test
- Practical demonstration of skills of airway, chest compressions, defibrillation, relieving of foreign body in airway
- Post Test.



**Mega Kelly**

## Nasogastric tube insertion and Tracheostomy care

### ➤ LEARNING OBJECTIVES

**At the end of the session the Student/learner should be able to**

- Place the NG tube at proper levels of the esophagus and stomach
- Perform NG tube irrigation and monitoring
- Insert tracheostomy tube and perform oropharyngeal /nasopharyngeal insertion and suctioning

### ➤ LOGISTICS REQUIRED

- NG tube and trach care trainer
- NG tube and tracheostomy tube
- Suction tube and lubricant

### ➤ ASSESSMENT

Practical demonstration of NG tube insertion and Tracheostomy tube insertion and suctioning



NG Tube and Trach Care Trainer

## Buttock Injection Simulator

### ➤ LEARNING OBJECTIVES

**At the end of the session the Student/learner should be able to:**

- To demonstrate steps in Intramuscular injection (I.M) techniques and to locate all necessary intramuscular injection sites.
- To secure Intramuscular Injection under aseptic precautions.

### ➤ LOGISTICS REQUIRED

- Buttock Injection simulator
- Both audio and visual

### ➤ ASSESSMENT

Practical demonstration of Intramuscular Injection



## Buttock Injection

## Intradermal Injection

### ➤ LEARNING OBJECTIVES

**At the end of the session the Student/learner should be able to:**

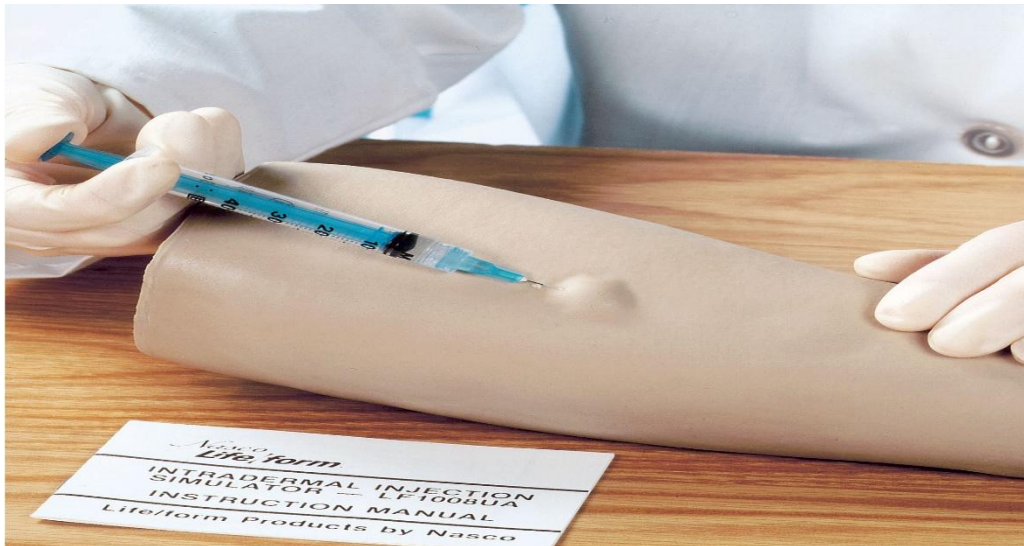
- To demonstrate steps in Intradermal injection (I.M) techniques and to locate all necessary intradermal injection sites.
- To secure Intradermal Injection with all aseptic precautions.

### ➤ LOGISTICS REQUIRED

- Intradermal Injection simulator
- Sealant, syringe

### ➤ ASSESSMENT

Practical demonstration of Intradermal Injection



## Intradermal Injection



## CPR Lilly Pro

### ➤ LEARNING OBJECTIVES

At the end of the session the Student/learner should be able to perform adequate:

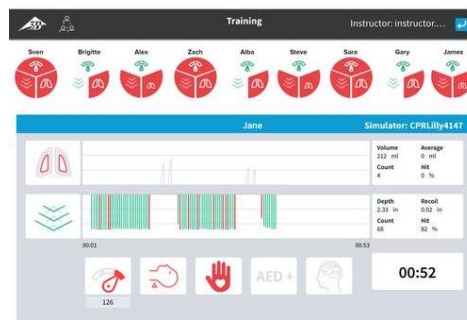
- Compression depth
- Compression rate
- Chest release
- Head tilt and jaw thrust indicator
- Palpable carotid pulse

### ➤ LOGISTICS REQUIRED

- CPR Lilly PRO+ training manikin
- 1 Tablet, Charger and battery
- 4 Lower face mask (including teeth)
- 25 throat bags
- Manikin Carrying bag

### ➤ ASSESSMENT

Practical demonstration of skills of chest compressions rate, depth, and position, recoil and chest compression and provides feedback with results.



## CPR Lilly Pro with Tablet

## Blood Pressure Training Arm

### ➤ LEARNING OBJECTIVES

**At the end of the session the Student/learner should be able to:**

- To demonstrate steps in Measure Blood Pressure techniques allows for practice of non-invasive blood pressure measurement, Auscultated and Palpation blood pressure simulation.
- To secure Blood Pressure under aseptic precautions.

### ➤ LOGISTICS REQUIRED

- Blood pressure Arm
- Blood pressure Trainer
- Blood pressure Cuff

### ➤ ASSESSMENT

Practical demonstration of Blood Pressure techniques



## Blood Pressure Training Arm

## Child Nursing Training Manikin

### ➤ LEARNING OBJECTIVES

**At the end of the session the Student/learner should be able to:**

- Basic patient handling
- Oral hygiene
- Oral intubation
- Venous cannulation
- Nasal intubation
- Catheterization skills
- Eye irrigation & ear irrigation
- Colonic irrigation
- Enema simulation
- NG tube insertion, care, removal and med administration
- Lavage/Gavage
- OG tube insertion
- Tracheostomy care and suctioning
- IV infusion
- Subcutaneous and intramuscular injections
- Heart, Breath & Bowel Sound Auscultation
- Vocal Sound capabilities for interpersonal communication skills

### ➤ LOGISTICS REQUIRED

- Full Body manikin
- Male and female Genitalia
- Urinary valves
- Anal Valves

### ➤ ASSESSMENT

Practical demonstration of skills from basic patient handling to advanced nursing, including the measurement of noninvasive blood pressure and the auscultation and recognition of normal and abnormal heart, lung and bowel sounds and fetal tones.



## Child Nursing Training Manikin

## Neonatal Peripheral

### ➤ LEARNING OBJECTIVES

At the end of the session the Student/learner should be able to perform adequate:

- General Handling
- Umbilical Cord
- Manual Umbilical Pulse
- Airway

### ➤ LOGISTICS REQUIRED

- New Born Anne
- Umbilical pulse bulb
- Umbilical cord
- IV bag connector
- Umbilical clamp

### ➤ ASSESSMENT

Practical demonstration of skills of chest compressions rate, depth, and position, recoil and chest compression and provides feedback with results.



## Neonatal Peripheral

## Resusci Anne QCPR

### ➤ LEARNING OBJECTIVES

At the end of the session the Student/learner should be able to perform adequate:

- Compression depth
- Compression rate
- Chest release
- Palpable carotid pulse

### ➤ LOGISTICS REQUIRED

- Full Body Manikin
- Two extra compression springs
- Manikin Wipes
- USB Cable A-C
- AC Power Adapter
- USB 2A

### ➤ ASSESSMENT

Practical demonstration of skills of chest compressions rate, depth, and position, recoil and chest compression and provides feedback with results.



Resusci Anne QCPR

## Trauma Nursing Manikin

### ➤ LEARNING OBJECTIVES

**At the end of the session the Student/learner should be able to perform adequate:**

- To demonstrate steps in
- Basic patient handling
- Denture care
- Oral hygiene
- Oral and nasal Intubation
- Eye and irrigation
- NG Tube insertion
- Lavage/Gavage
- Tracheostomy care and suctioning
- IV care and management
- Subcutaneous and intramuscular injection
- Oxygen delivery procedures
- Ostomy irrigation and care
- Catheterization skills
- Enema simulation
- Colonic irrigation
- Wound assessment and care
- Bandaging and dressi
- Post-surgical mastectomy-care procedures
- Recognition of breast disorders, their sizes and relative locations
- Practice of fundus massage skills
- Auscultation and recognition of normal and abnormal heart, breath and bowel sounds and fetal tones

➤ **LOGISTICS REQUIRED**

- Full Body Female Manikin
- Abdominal Surgical Incision Module with Staples and Penrose Drain
- Abdominal Surgical Incision Module with Nylon Sutures and Penrose Drain
- Abdominal Packing and Irrigation Module
- Abdominal Subcutaneous Heparin and Insulin Injection module
- Infected Colostomy Stoma
- Ventral Gluteal Decubitus Ulcer Dorsal Gluteal Decubitus Ulcer
- Below Knee Amputation Stump
- Thigh Packing and Irrigation Module and Suture Module
- Thigh Debridement Module
- Varicose Vein Leg
- Diabetic Foot

➤ **ASSESSMENT**

Practical demonstration of skills of chest compressions rate, depth, and position, recoil and chest compression and provides feedback with results.



**Trauma Nursing Manikin**

## PREMIE Blue Simulator with Smart Skin

### ➤ LEARNING OBJECTIVES

**At the end of the session the Student/learner should be able to:**

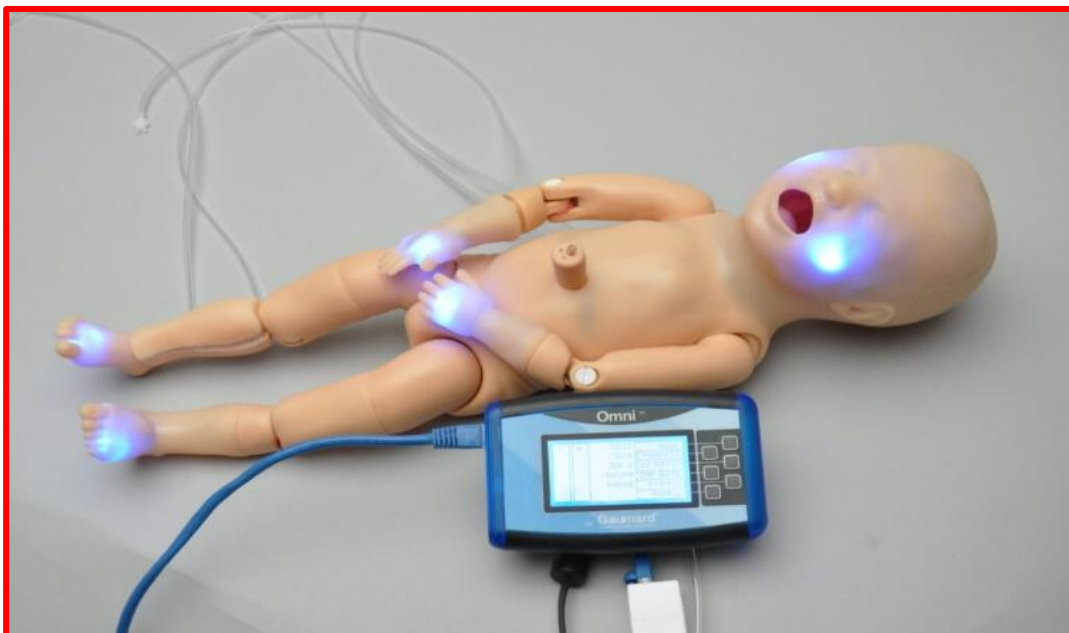
- 28 week articulating PREMIE™
- Realistic airway with tongue, vocal cords, trachea, and esophagus for airway management exercises
- Realistic internal organs for unparalleled CPR performance
- Simulate “heelstick” maneuver for capillary blood sample
- BVM or CPR exercises
- Oral and nasal Intubation
- Simulate suction procedures
- Bilateral lung expansion with realistic chest rise
- View peripheral and central cyanosis as well as healthy skin tone
- Use monitor to select rates of improvement and deterioration
- Watch skin color change in response to the efforts of your student
- Pulse umbilicus using squeeze bulb
- Practice placement of umbilical lines
- Simulate CPR with either two-thumb “encircling” technique or two finger alternate compression method
- Practice delicate intraosseous access
- Practice injection and intravenous techniques

### ➤ LOGISTICS REQUIRED

- PREMIE™ Blue neonate
- Omni™ Controller for managing cyanosis and monitoring CPR
- Omni™ Code Blue® pack
- International power supply 100-240 VAC
- Connecting cables
- Instruction manual
- Carrying bag

### ➤ ASSESSMENT

Practical demonstration of PREMIE Blue Simulator with Smart Skin





## **SUTURE PRACTICE ARM**

### ➤ **LEARNING OBJECTIVES**

**At the end of the session the Student/learner should be able to:**

- To demonstrate steps in
- Movable fingers for suture training of challenging wounds between fingers
- Skin and subcutaneous tissue differentiated for realistic suture experience
- Wounds can be inflicted by instructor anywhere on the training arm
- Each cut can be sutured several times
- Surgical staples procedure possible

### ➤ **LOGISTICS REQUIRED**

- Suture Practice Arm

### ➤ **ASSESSMENT**

- Practical demonstration of Suture Practice Arm



## **SUTURE PRACTICE ARM**

## WOUND CARE/BANDAGING TECHNIQUE TRAINER

### ➤ LEARNING OBJECTIVES

At the end of the session the Student/learner should be able to:

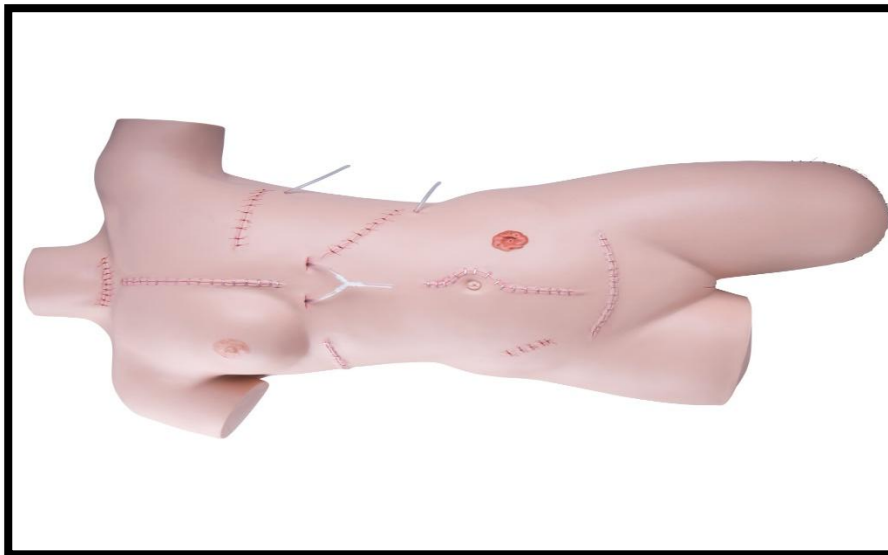
- To demonstrate steps in
- Wound after a thyroidectomy
- Wound after a sternotomy
- Wound after a mastectomy
- Wound after a splenectomy
- Wound after a thoracotomy (pneumonectomy)
- Wound after a median laparotomy (cystectomy)
- Wound after an appendectomy
- Wound after a Pfannenstiel incision (C- section or abdominal hysterectomy)
- Wound after a laminectomy
- Wound after a nephrectomy
- Wound after an amputation
- Colostomy
- Decubitus

### ➤ LOGISTICS REQUIRED

- Realistic practice of wound care

### ➤ ASSESSMENT

Practical demonstration of Wound care and Bandaging Techniques



## WOUND CARE/BANDAGING TECHNIQUE TRAINER

## **INFANT AIRWAY MANAGEMENT TRAINER**

### ➤ **LEARNING OBJECTIVES**

**At the end of the session the Student/learner should be able to:**

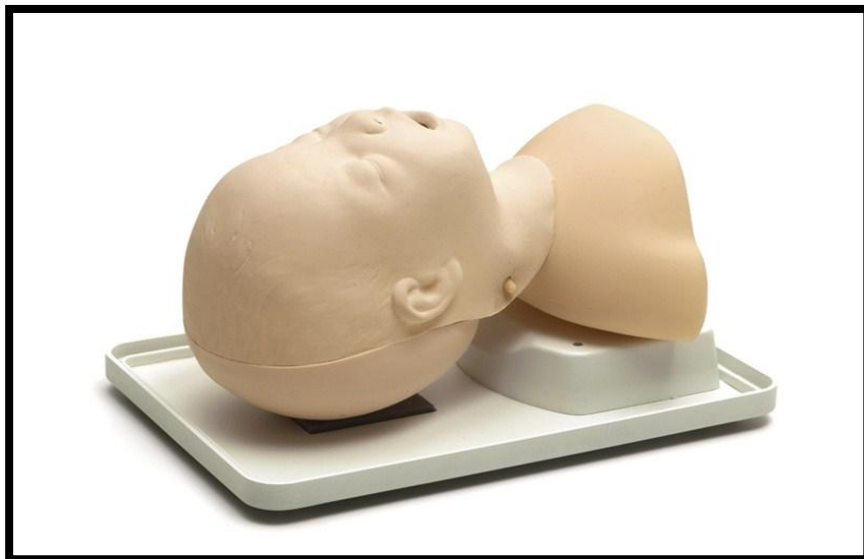
- To demonstrate steps in
- Ventilation via bag-valve-mask
- Endotracheal and nasotracheal intubation
- Bilateral lung movement and stomach distention
- Oral/Nasal Airways
- Insertion of LMA (Laryngeal Mask Airway)

### ➤ **LOGISTICS REQUIRED**

- Infant Airway Management trainer manikin

### ➤ **ASSESSMENT**

Practical demonstration 3-month-old infant for teaching and practicing basic and advanced airway management skills.



## **INFANT AIRWAY MANAGEMENT TRAINER**

## **INFANT MALE & FEMALE CATHETERIZATION TRAINER**

### ➤ **LEARNING OBJECTIVES**

**At the end of the session the Student/learner should be able to:**

- To demonstrate steps in
- Practice insertion, position, catheter balloon inflation and deflation
- Feel resistance and pressure as with a real patient
- Urine flows when catheter is in proper position
- Practice both male and female infant catheterization training
- Anatomically realistic with both male and female genitals
- Genitals made of soft, lifelike material
- Replaceable male and female genitals
- Lower half of infant only
- Design for use with a standard 8 French latex or silicone intermittent catheter

### ➤ **LOGISTICS REQUIRED**

- Infant torso
- Female genitals set
- Male genitals set
- 4-oz. squeeze bottle

### ➤ **ASSESSMENT**

Practical demonstration of Infant Male and Female Catheterization Trainer is an inexpensive 2-in-1 trainer that provides realistic practice of this difficult skills procedure.



## **INFANT MALE & FEMALE CATHETERIZATION TRAINER**

## INTRASOSEOUS INFUSION SIMULATOR

### ➤ LEARNING OBJECTIVES

At the end of the session the Student/learner should be able to:

- To demonstrate steps in
- Intraosseous Infusion Simulator is a dramatic and exciting training aid designed to demonstrate and simulate the intraosseous infusion procedure.
- Students will be able to learn and practice, with incredible accuracy and realism, a procedure which has been difficult to simulate in the past.
- Prior to the Intraosseous Infusion Simulator, educators resorted to unsanitary chicken and turkey bones.
- PALS programs will find this teaching aid a convenient and sanitary alternative.

### ➤ LOGISTICS REQUIRED

- 10 replaceable bone inserts,
- two sets of replacement leg skins,
- two white towelettes,
- syringe with tubing, blood powder, sealing wax, 1/2 oz. liquid lubricant, mixing bottle, needle, and hard carrying case.

### ➤ ASSESSMENT

Intraosseous Infusion Simulator is a dramatic and exciting training aid designed to demonstrate and simulate the intraosseous infusion procedure. Students will be able to learn and practice, with incredible accuracy and realism, a procedure which has been difficult to simulate in the past.



## INTRASOSEOUS INFUSION SIMULATOR

## INFANT CRISIS

### ➤ LEARNING OBJECTIVES

**At the end of the session the Student/learner should be able to:**

- To demonstrate steps in
- CPR: Palpable and visual landmarks fully articulated head, neck, and jaw jaw thrust
- Airway Management: Realistic anatomy of the mouth, tongue, oral pharynx, larynx, epiglottis, vocal cords, trachea, and esophagus oral and digital intubation capabilities suctioning capabilities
- IV Arm & Leg: Smaller lumen tubing simulates the size of an infant's veins realistic flashback from a pressurized system replaceable skin and veins
- ECG/Umbilical Cannulation Skin Arrhythmia recognition learn proper techniques in umbilical catheterization allows practice of umbilical cannulation, cutting, and clamping aspirate fluid through the umbilicus
- Intraosseous Infusion: Palpable landmarks include the patella, tibia, and tibial tuberosity replaceable bones and skin pressurized system allows aspiration of fluid

### ➤ LOGISTICS REQUIRED

- ECG Chest Skin
- IV bags with clamps
- Synthetic blood
- Winged infusion sets
- Syringes
- 22-gauge needles
- Disposable umbilical cords and clamps
- Lubricant
- Intraosseous bone kit with needle
- Towels
- Instruction manual
- Hard carry case

### ➤ ASSESSMENT

The most comprehensive PALS trainer available, the manikin allows practice of 4-lead ECG monitoring, IV therapy, umbilical catheterization, airway management, intraosseous infusion, and CPR - all in one manikin.



## INFANT CRISIS

## CRITICAL AIRWAY MANAGEMENT TRAINER

### ➤ LEARNING OBJECTIVES

**At the end of the session the Student/learner should be able to:**

- To demonstrate steps in
- Wound care,
- CPR, Intubation,
- cricothyrotomy & Difficult airway management.

### ➤ LOGISTICS REQUIRED

- Lubricant
- Instruction manual

### ➤ ASSESSMENT

This very difficult intubation head, coupled with the CPR torso, supplies the challenges for initiating respiratory care to the critical patient. By using the features of tongue swelling and laryngospasm the instructor creates a critical airway management problem that requires the student to perform cricothyrotomy. In addition, two external and one internal bleeding wounds demand attention with suctioning and bleeding control.



## CRITICAL AIRWAY MANAGEMENT TRAINER

## BREAST EXAMINATION

### ➤ LEARNING OBJECTIVES

**At the end of the session the Student/learner should be able to:**

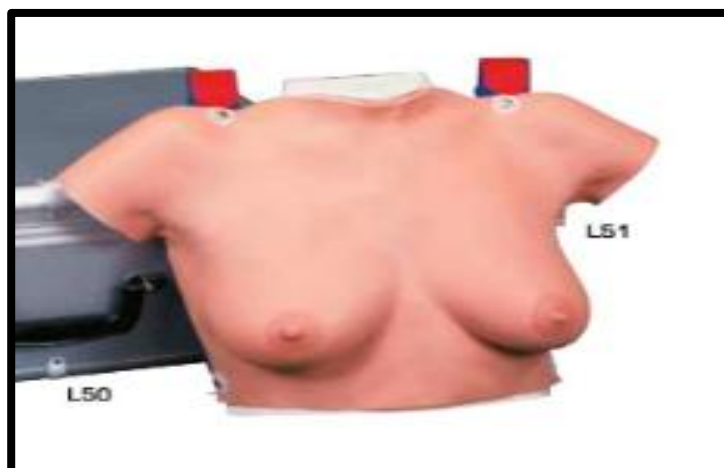
- To demonstrate steps in
- Clinical Breast Examination (CBE)
- Self-Breast Examination(SBE)
- Identification of anatomical landmarks
- Identification of lymph nodes (Axillar, supra & infraclavicular)
- Location and diagnosis of pathologies
- Professional-to-patient communication

### ➤ LOGISTICS REQUIRED

- Lubricant
- Instruction manual

### ➤ ASSESSMENT

This model shows the cast from an original female chest with a middle sized breast. To demonstrate the breast examination of a woman in a reclining position, place the model on the supplied base (the carrying straps can be fastened underneath the base). The strap-around mechanism also allows studying and practicing breast examination in an upright position or as self-examination. Strapping around the Breast Examination Model is done easiest with the assistance of another person. The carrying straps are crossed behind the back, threaded through the white clips at the bottom side of the model and secured with the Velcro fastening



## BREAST EXAMINATION



## **NOSE BLEED/EPISTAXIS TRAINER**

### ➤ **LEARNING OBJECTIVES**

**At the end of the session the Student/learner should be able to:**

- For training in cautery and nose packing
- Success of cautery, at four sites on septum, identified by light panel (battery included)
- The trainee must identify the bleeding point, clear it by suction and deal with it either by nasal packing or cautery

### ➤ **LOGISTICS REQUIRED**

- Hard plastic head with soft nasal area
- Control box and 9v battery
- 10ml syringes (4)
- 50 ml syringe (1)
- AR204 BLOOD CONCENTRATE
- Instruction manual

### ➤ **ASSESSMENT**

Students must identify the bleeding point, clear it by suction, and stop the bleeding either by nasal packing or cautery. The nasal interior has capillary tubes for delivering artificial blood at variable rates to four sites on the septum. Each site also contains an indicator light that illuminates to signal a successful cautery. Includes hard plastic head with soft nasal area, control box, four 10 ml syringes, a 50 ml syringe, blood concentrate, and instruction manual. This model, manufactured by Adam Rouilly, now comes with a 1 Year Guarantee. This guarantee applies to models which have been used correctly and covers durability and functionality.



## **NOSE BLEED/EPISTAXIS TRAINER**

## **CPR/BLS ADULT HALFBODY TRAINING MANIKIN**

### ➤ **LEARNING OBJECTIVES**

**At the end of the session the Student/learner should be able to:**

- Anatomical Landmarks
- Mouth-to-Mouth ventilations
- Chest compression
- Head tilt/chin lift maneuver
- Ventilations with visible chest rise
- Bag valve mask ventilations

### ➤ **ASSESSMENT**

The latest generation Little Anne takes CPR classroom setup and training to the next level. The go-to community CPR manikin has been redesigned for improved efficiency, ease of use, and training impact.



## **CPR/BLS ADULT HALFBODY TRAINING MANIKIN**

## ADVANCED GYNAECOLOGICAL EXAMINATION TRAINER

### ➤ LEARNING OBJECTIVES

**At the end of the session the Student/learner should be able to:**

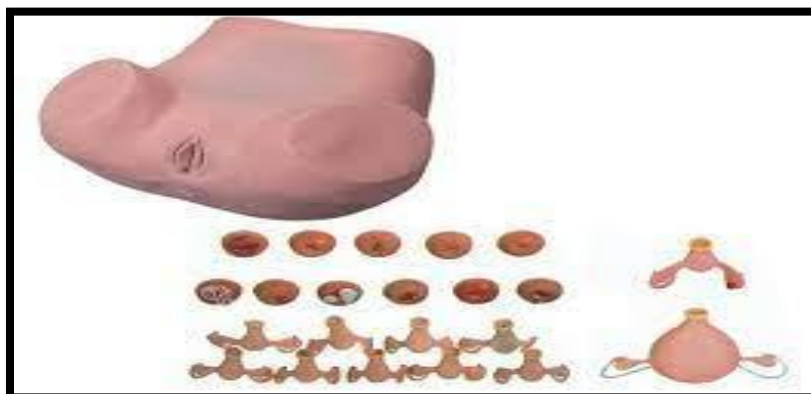
- Full-size adult female lower torso with standard lithotomy;
- Relevant internal anatomy includes uterus, ovary, fallopian tubes and round ligament;
- External pelvic measurement; Bimanual examination;
- Rectal-vaginal examination (including insertion of speculum and colposcopy );
- Analysis of cervical lesions;
- Placement and removal of IUD;
- Normal transparent uteri with uterus round ligament, one anteverted and the other retroverted;
- Normal uterus with moderate retroversion, myomatous uterus, uterus with salpingitis on the right side, uterus with salpingitis on the left side, uterus with marked anteversion-anteflexion, uterus with deformation and salpingitis on the right side and uterus with ovarian cyst on the left side;
- Normal cervix, linear laceration which may also indicate parous, cervical erosion with some mucus, cervical polyp, inflamed Nabothian cyst, acute purulent cervicitis and carcinoma;
- Using “air bag” to make the uterus stable;
- Interchangeable skin (not included in standard package); Uteri and cervices can be assembled discretionarily.

### ➤ LOGISTICS REQUIRED

- Realistic model simulates a female lower body including abdomen and basin
- 7 replaceable cervixes and 10 uteri

### ➤ ASSESSMENT

Practical demonstration of various pathologies and uteri in different stages practice of this difficult skills procedure.



## ADVANCED GYNAECOLOGICAL EXAMINATION TRAINER